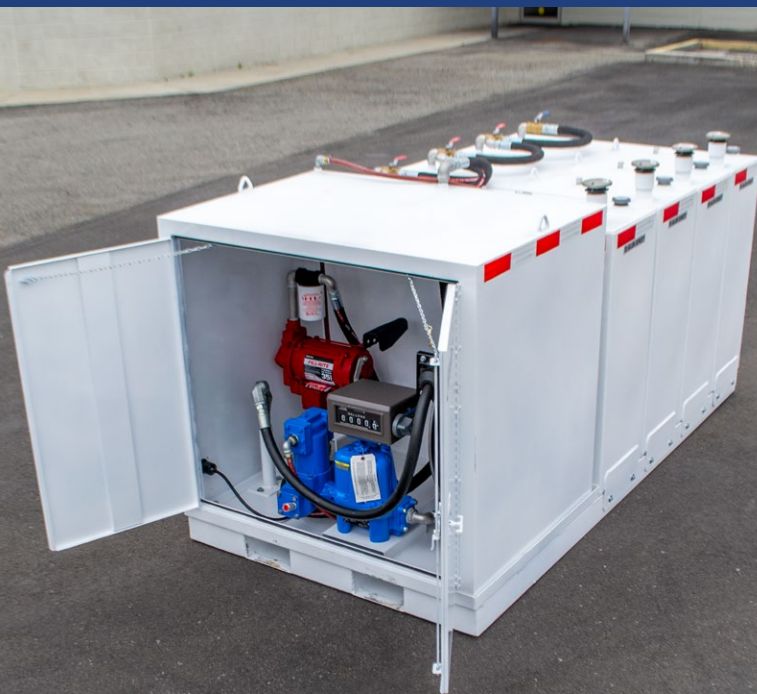


# M-Series (No HazMat) Diesel Fuel Skids



This diesel package features (1, 2, 3, or 4) single wall 119-gallon stainless steel tanks. All the tanks are mounted on a heavy-duty steel platform and can be easily moved using built-in forklift pockets. The M-Series skids can be securely installed on a truck or trailer and are fully compliant for transporting diesel fuel on public roads—no Hazmat certification required.

Our standard equipment packages are all made up of proven names such as Great Plains Industries, Facet, OPW, Continental Hose, and Hannay. We can customize the equipment packages to run off 12-volt DC, 115-volt AC, or a gasoline-powered pump.

## STANDARD FEATURES

- Tank Level gauge, lockable fill cap, roll over vent
- Aluminum construction, baffles to prevent fuel sloshing
- Powder coat paint with base coat primer
- Hoses, piping and fittings are diesel grade
- Ball valve installed to isolate the tank.  
Top mounted

## UPGRADES & ACCESSORIES

- TCS certifiable re-sale meters
- Lockable steel equipment cabinets
- Solar re-charge systems
- Re-Fuel / De-Fuel system
- Hose and reel sizes up to 150' long and 2" diameter

We build your trailer according to your specs.  
Please contact us for any special features.

**1-800-994-TANK (8265)**



14700 Industry Circle  
La Mirada, CA 90638  
PH: 714-226-1914  
[transfueler.com](http://transfueler.com)



# M-Series (No HazMat) Diesel Fuel Skids



## SPECIFICATIONS

<b>TFS-M1-D</b>	Tank Size	119-gallons ea. (1 tank)
	Tank Thickness	12 Gauge
	DOT Status	Approved for Gas & Diesel
	Fuel Baffles	1
	Weight	1,000 lbs*
	LxWxH	59" x 48" x 41"

<b>TFS-M2-D</b>	Tank Size	119-gallons ea. (2 tanks)
	Tank Thickness	12 Gauge
	DOT Status	Approved for Gas & Diesel
	Fuel Baffles	1
	Weight	1,250 lbs*
	LxWxH	76" x 48" x 41"

<b>TFS-M3-D</b>	Tank Size	119-gallons ea. (3 tanks)
	Tank Thickness	12 Gauge
	DOT Status	Approved for Gas & Diesel
	Fuel Baffles	1
	Weight	1,500 lbs*
	LxWxH	93" x 48" x 41"

<b>TFS-M4-D</b>	Tank Size	119-gallons ea. (4 tanks)
	Tank Thickness	12 Gauge
	DOT Status	Approved for Gas & Diesel
	Fuel Baffles	1
	Weight	1,800 lbs*
	LxWxH	110" x 48" x 41"

\*Please note that these weights are estimates, including the Skid, Tank(s), and a basic equipment package.



Scan to learn more  
& request a free quote



14700 Industry Circle  
La Mirada, CA 90638  
PH: 714-226-1914  
transfueller.com

